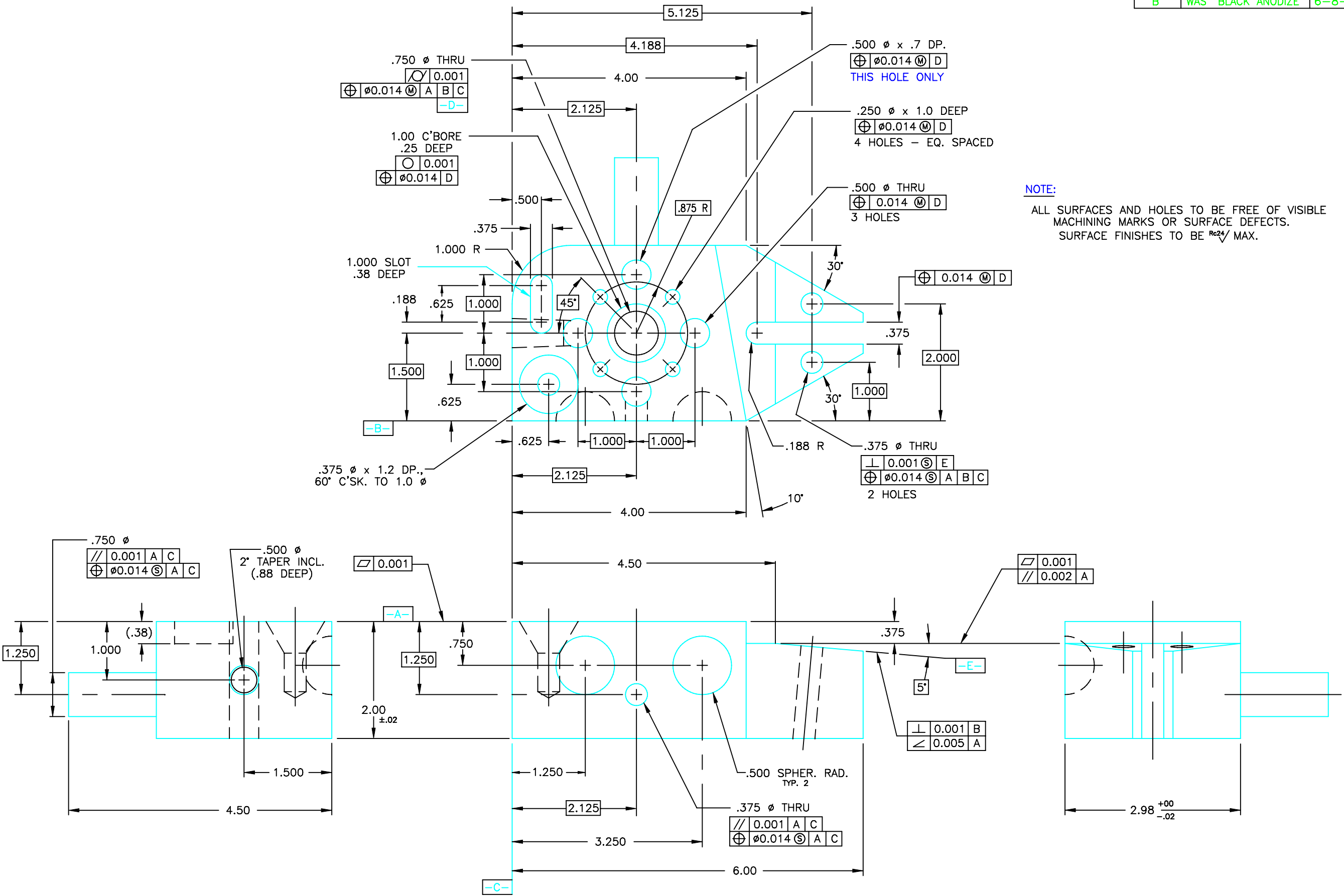


REVISION	DESCRIPTION	DATE
A	REDESIGNED & REDRAWN	9-16-98
B	WAS "BLACK ANODIZE"	6-8-00



**NOTE:**  
 ALL SURFACES AND HOLES TO BE FREE OF VISIBLE MACHINING MARKS OR SURFACE DEFECTS.  
 SURFACE FINISHES TO BE  $Ra_{24}$  MAX.

DIM. TOLERANCES UNLESS OTHERWISE SPECIFIED: 1 PLACE: +/- .030 2 PLACE: +/- .010 3 PLACE: +/- .005	MATERIAL ALUMINUM	SCALE: 1:1 DATE: 12-13-96 DRAWN: D. FISH	NO. REQ'D. 1	<b>HELMEL</b> HELMEL ENGINEERING PRODUCTS, INC. 6520 LOCKPORT ROAD NIAGARA FALLS, NEW YORK 14305
	HEAT TREAT	CHK'D.	PART NAME "GEOWIDGET" TRAINING PART	
	FINISH BLUE ANODIZE (B)	WEIGHT	DWG. NO. CQ-00999 REV. B	